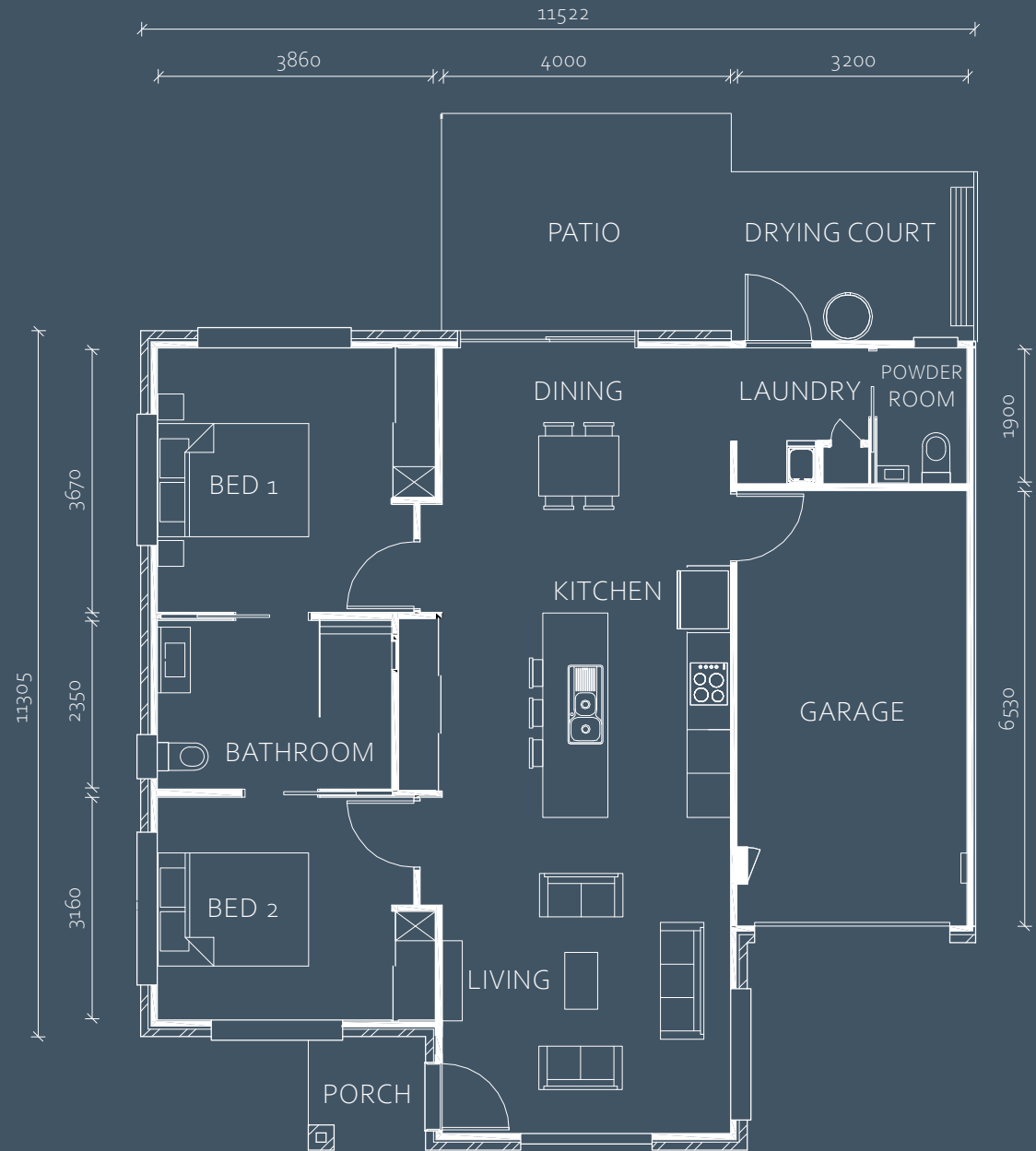


The Kingscliff

2  1.5  1  124.5m²

Located in an elevated position, The Kingscliff design has featured in Oak Tree Communities for a number of years and receives positive feedback from our residents.

Offering two spacious bedrooms with a two-way ensuite, it is the ideal design to meet the 'his and hers' living arrangement. Visitors have access to a powder room located off the laundry and we have added a door for ease of access to the clothesline.

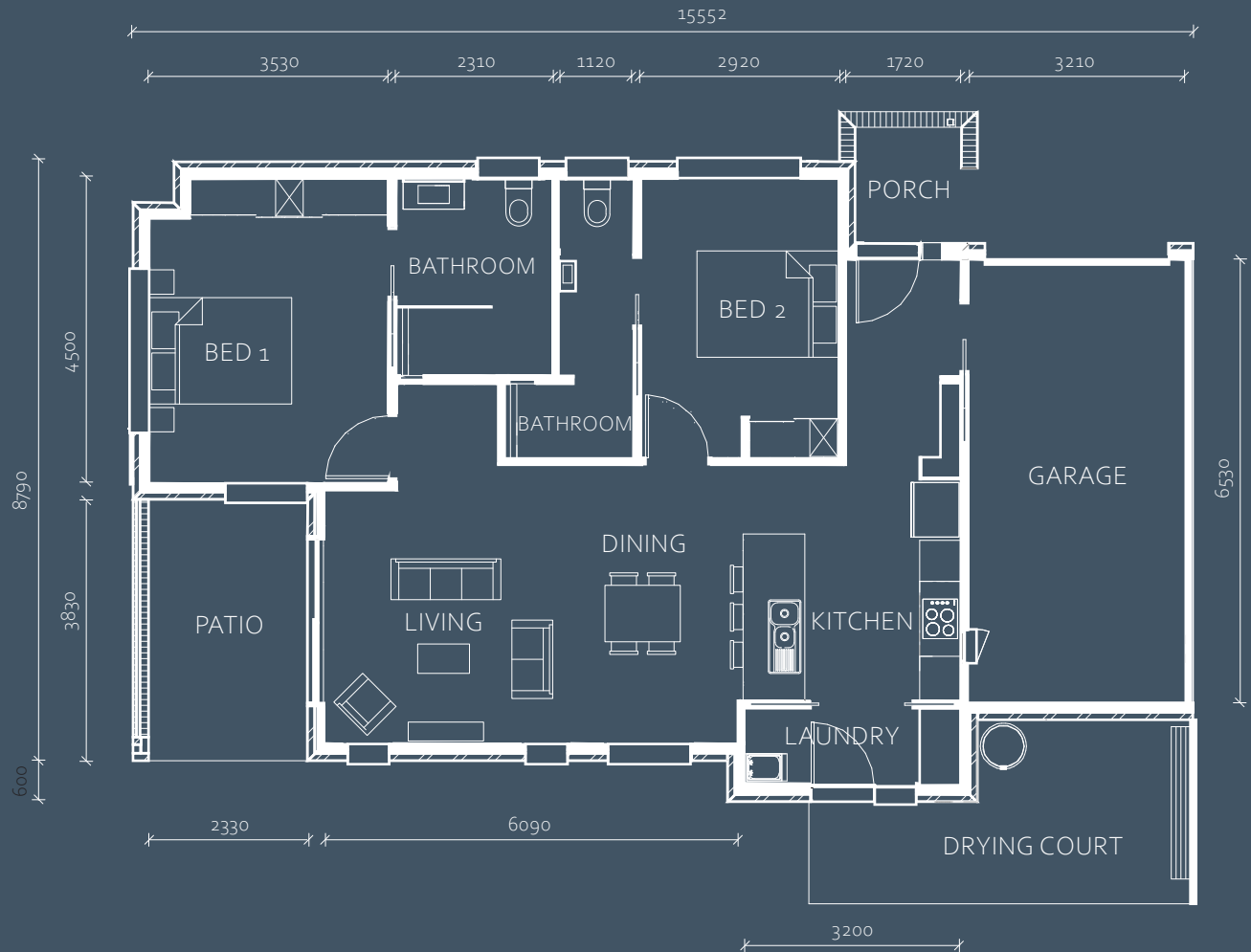


The Cabarita

2  2  1  134.5m²

Designed to maximise the Northern orientation to living areas, you will downsize without compromise with two large bedrooms offering private ensuite and built-in robes.

The underroof patio takes full advantage of the morning sun and will become a favourite place to enjoy a cuppa.

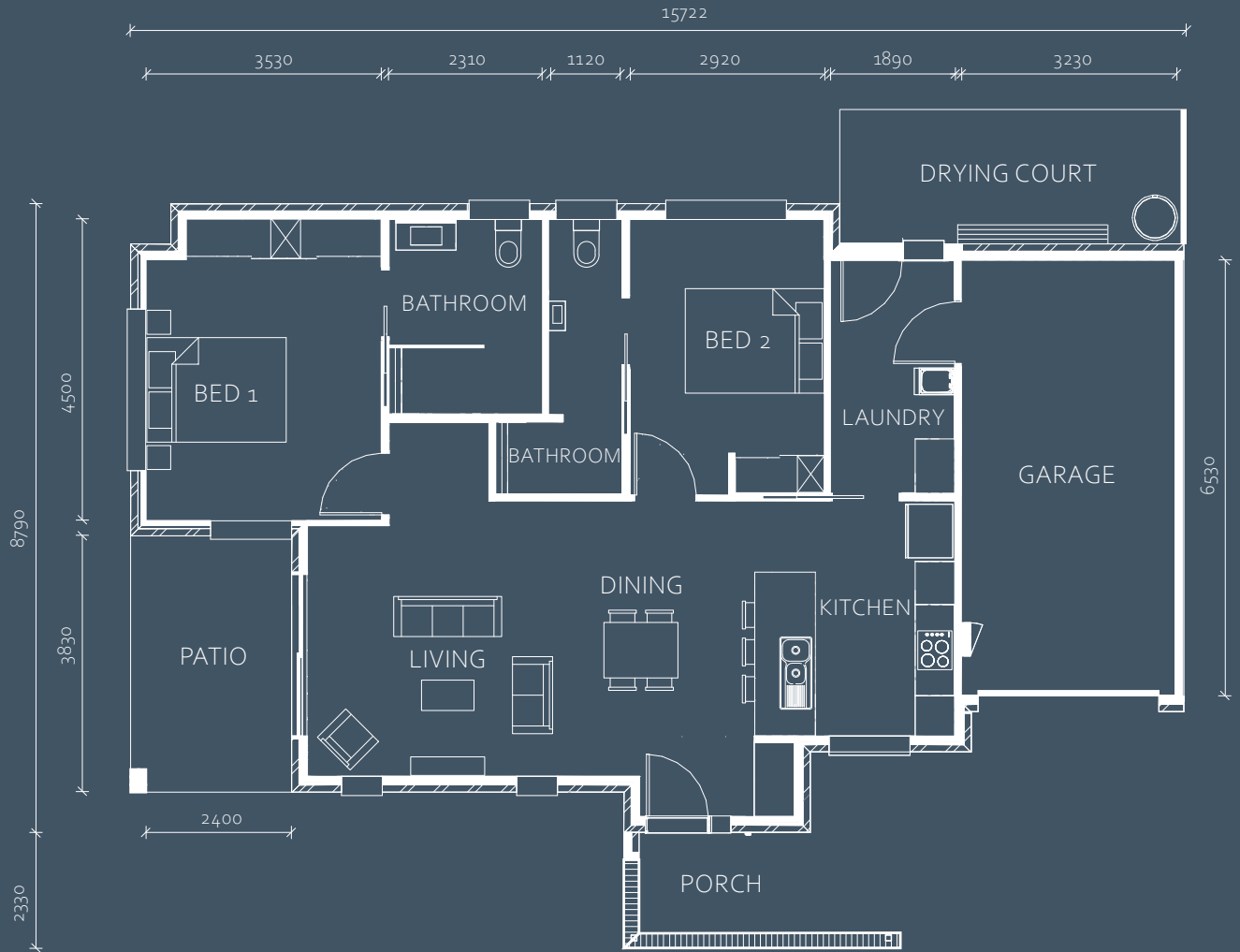


The Potsville

2  2  1  136.5m²

Similar design to the Cabarita offering two bedrooms and two full bathrooms but built on the opposing side of the street and therefore providing your front entrance to the North.

It has become a popular house design in recent years with many residents enjoying the Northern aspect of the porch dwarf wall to enjoy a morning cuppa and wave to neighbours. Privacy screening is available to the underroof patio if you desire.

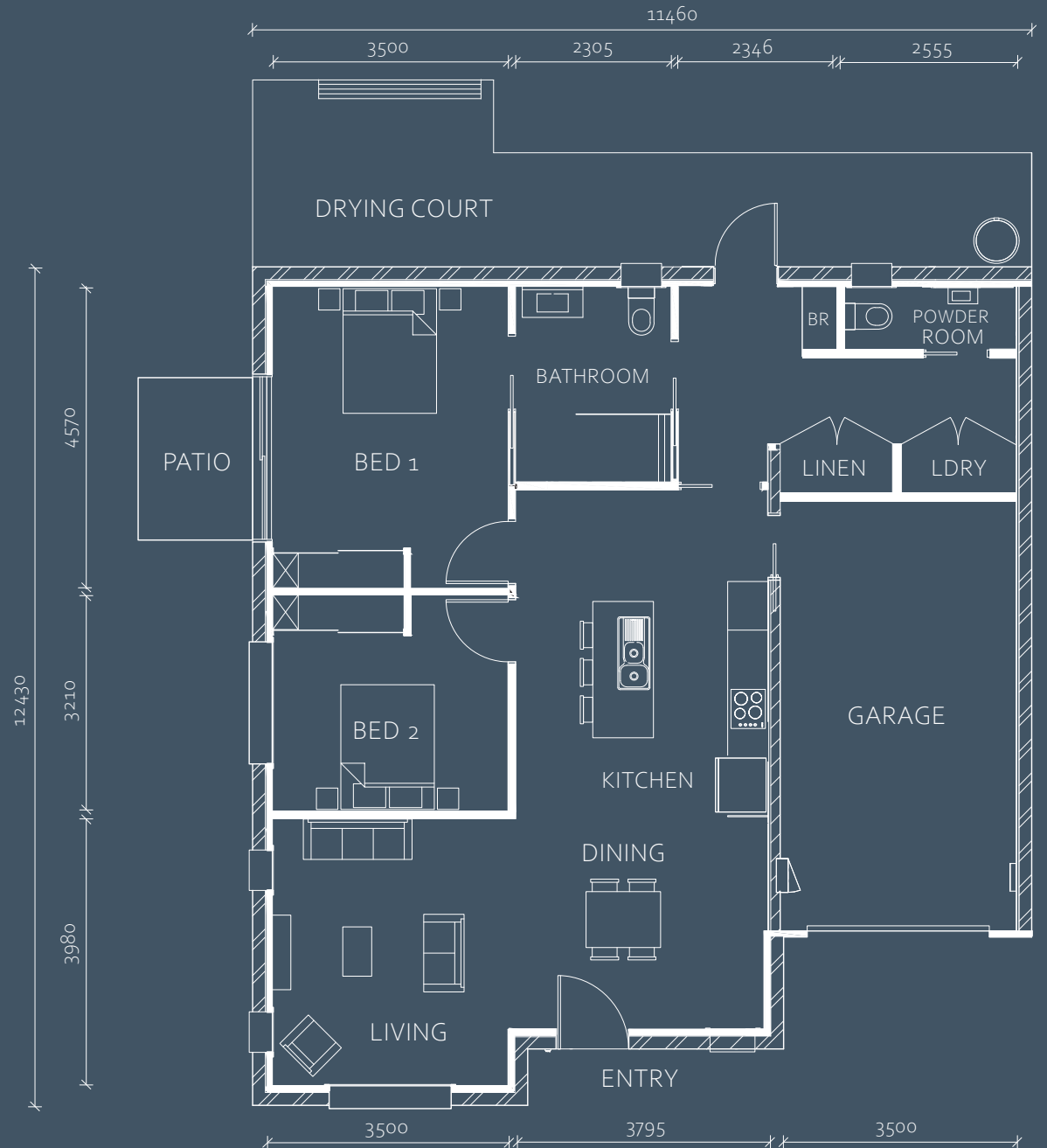


The Brunswick (Under)

2  1.5  1  150m²

North facing and the ideal solution for dealing with a sloping block of land, the lower level villa offers a spacious open plan living space with separate lounge.

Private outdoor space and landscaped gardens makes this home very pet friendly.

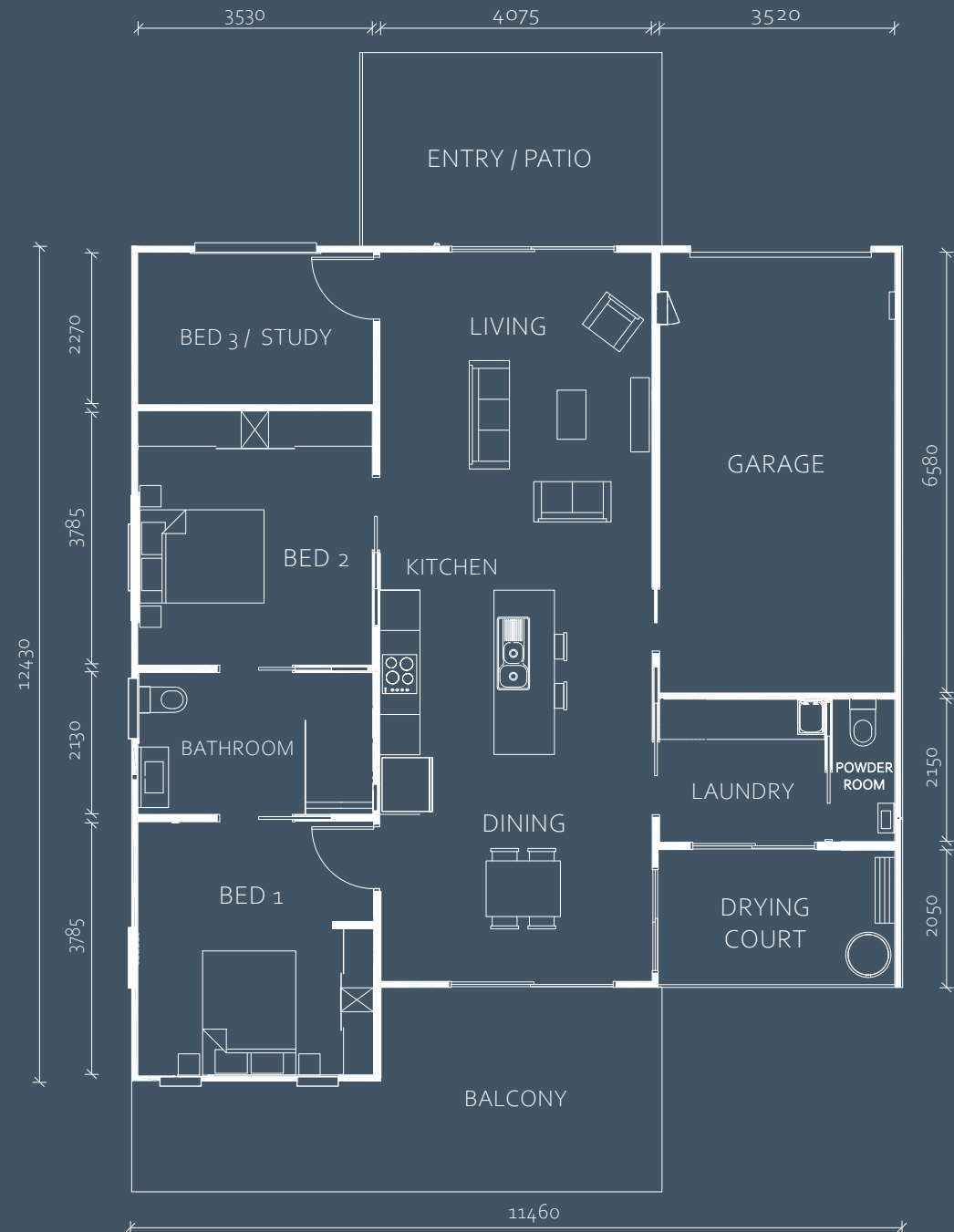


The Yamba (Over)

3  1.5  1  150.5m²

Designed to enter from the top street, this elevated property offers a deep set back to provide secondary tandem carparking and private balcony.

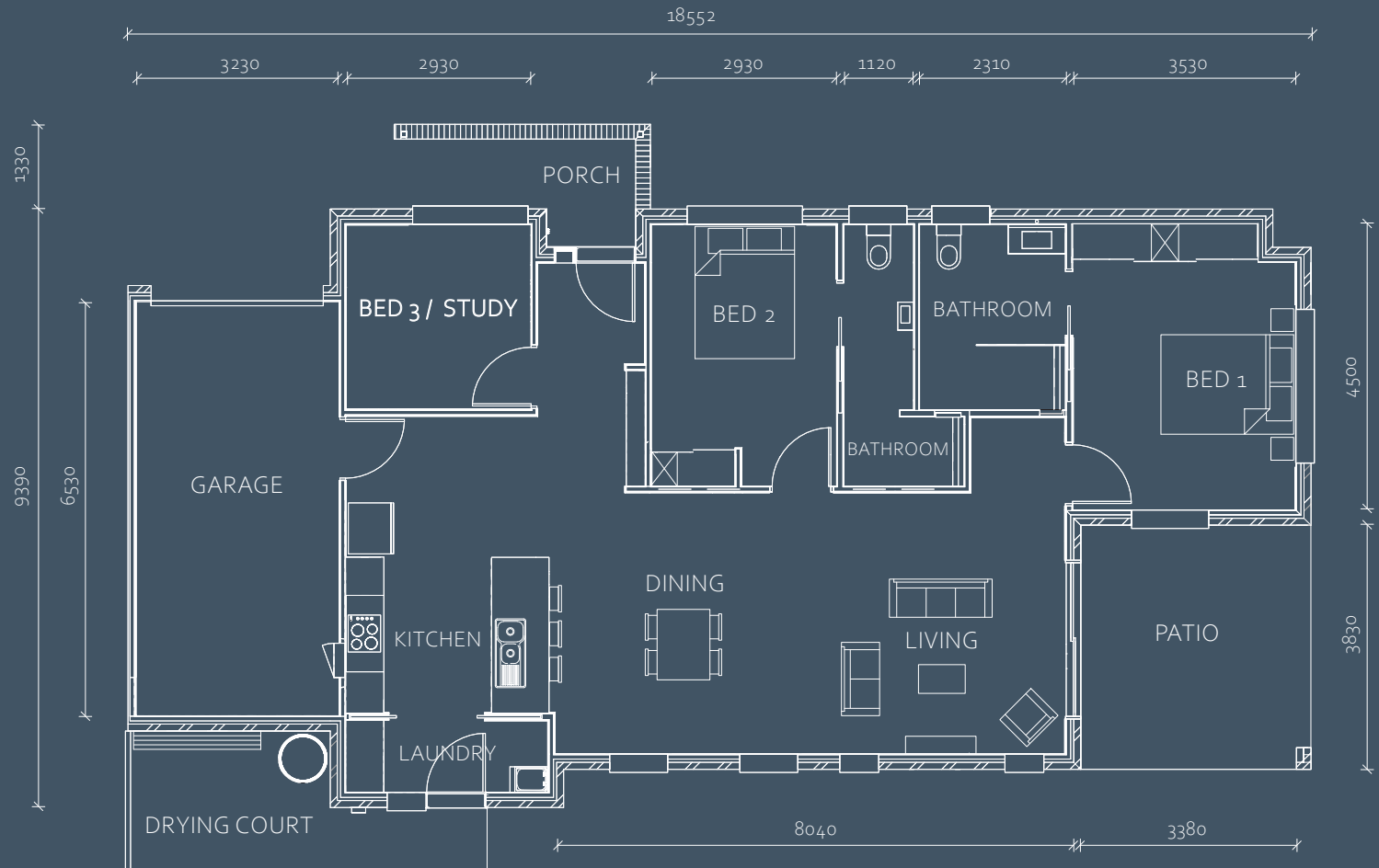
Open plan design with a designated laundry and second toilet with access to the balcony encourages light and breezes all year round.



The Ballina

3  2  1  163.5m²

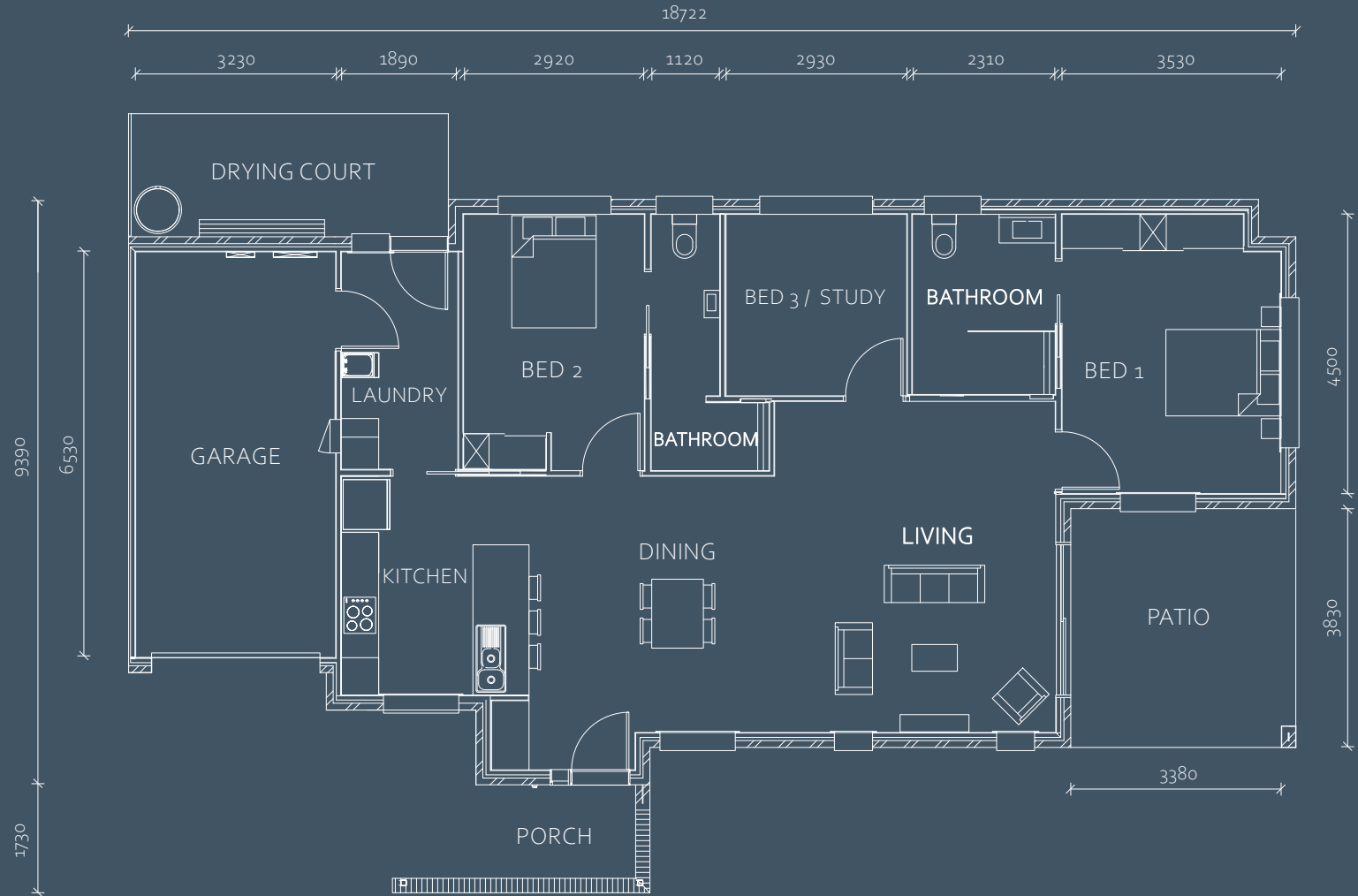
The three bedroom and two-bathroom version of the Cabarita and limited availability of just two makes this a highly sort after home.



The Byron

3  2  1  163m²

Offering three bedrooms and two full bathrooms, this is a large home. North facing living and entertaining will be enjoyable all year round.



The Angourie

3  2  2  193.5m²

Entertain with ease in this three bedroom home. Limited opportunity to provide double lock up garage makes this design highly prized.

