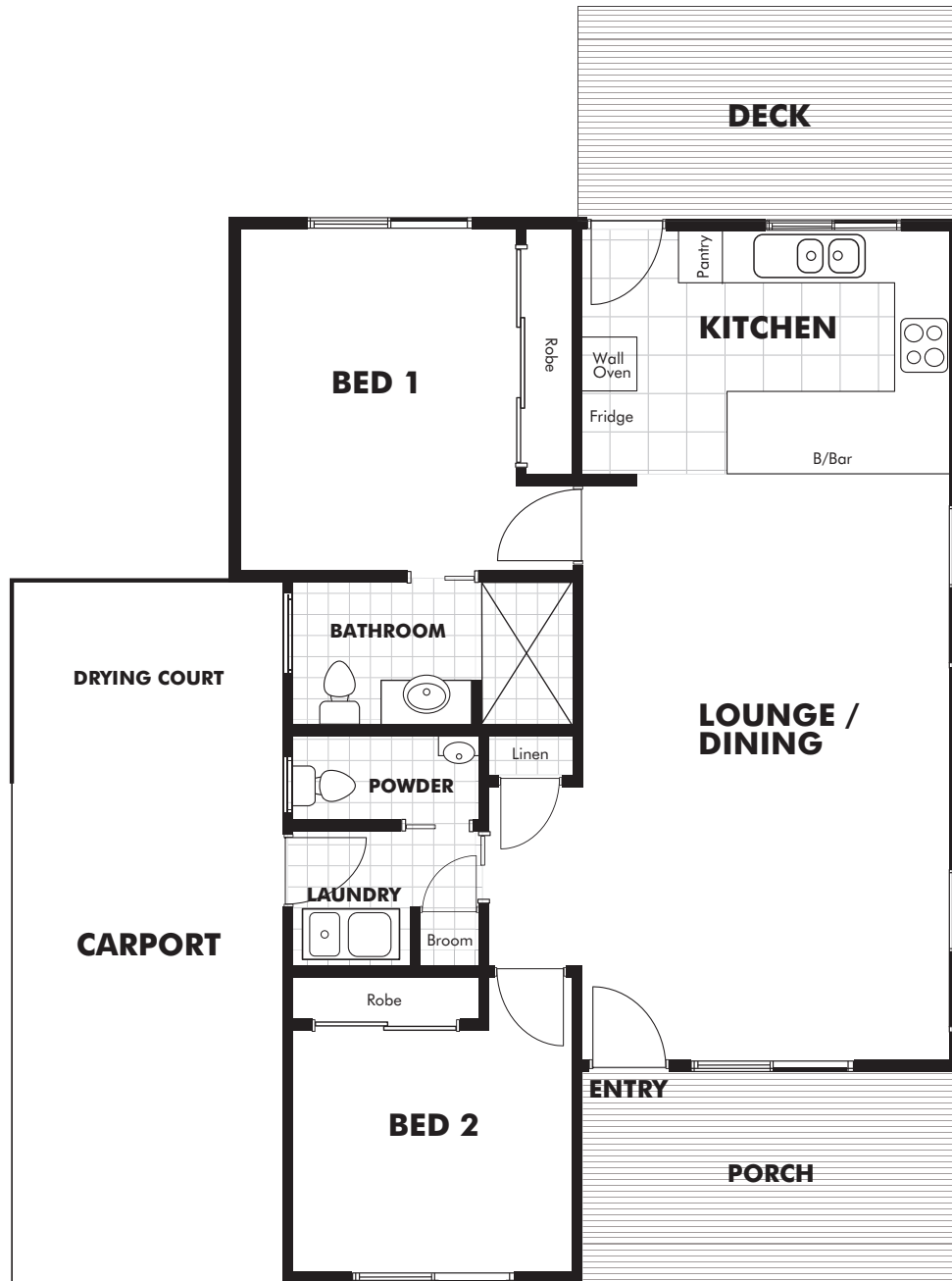


ROBIN



Residence	81.6 m ²
Carport/Drying Court	23.1 m ²
Deck / Porch	21.5 m ²
Total	126.1 m²

Disclaimer:

- These plans are for marketing purposes only and whilst are generally typical of the villa layout, some minor variations may apply.
- Furniture not included.
- Final layout is subject to detailed input from service consultants and authorities.
- Gross areas are measured to exterior face wall.