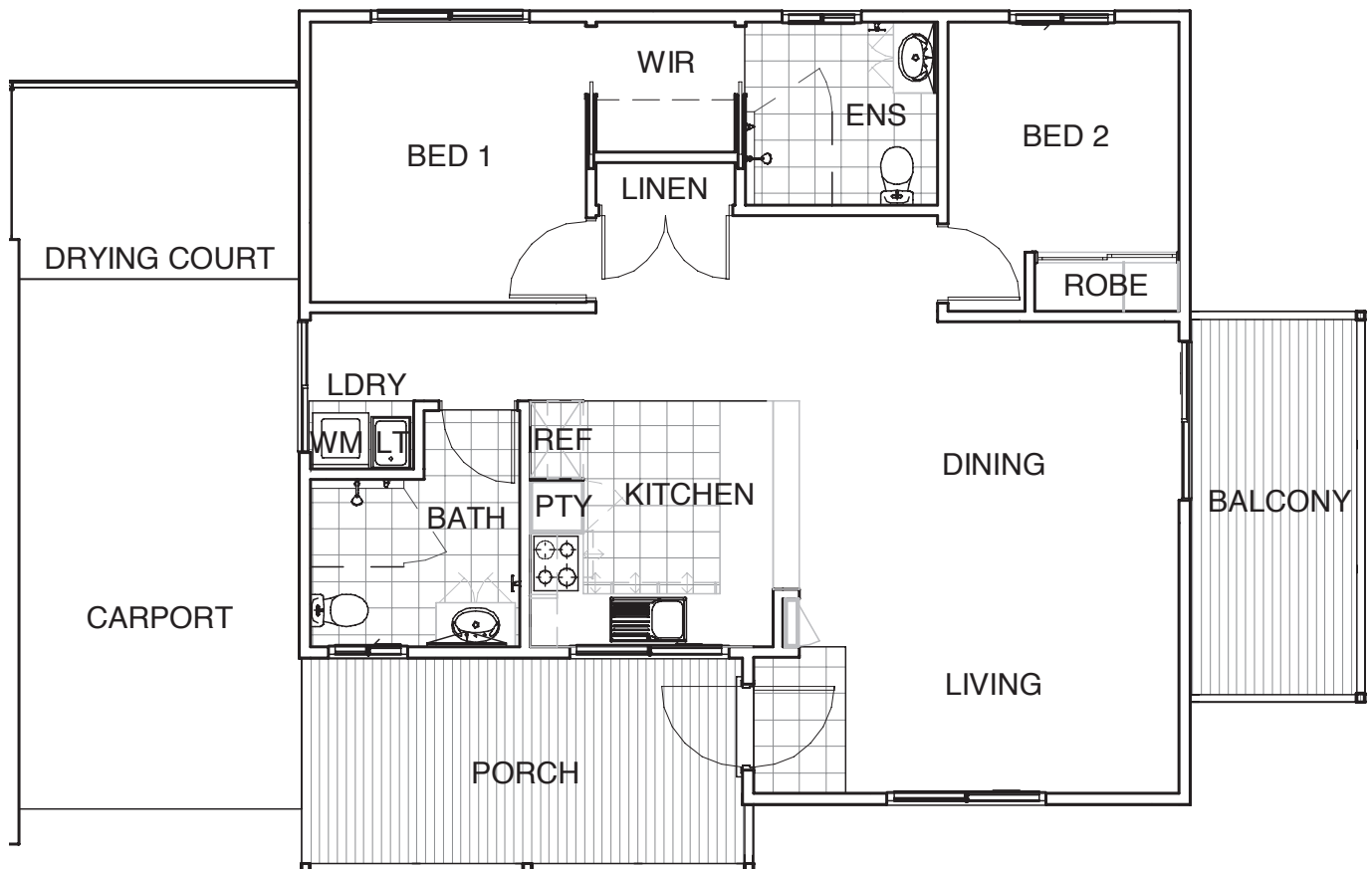


PARDALOTE



Residence	82.7 m ²
Carport / Drying Court	27.0 m ²
Patio / Deck	20.9 m ²
Total	130.6 m²

Disclaimer:

- These plans are for marketing purposes only and whilst are generally typical of the villa layout, some minor variations may apply.
- Furniture not included.
- Final layout is subject to detailed input from service consultants and authorities.
- Gross areas are measured to exterior face wall.