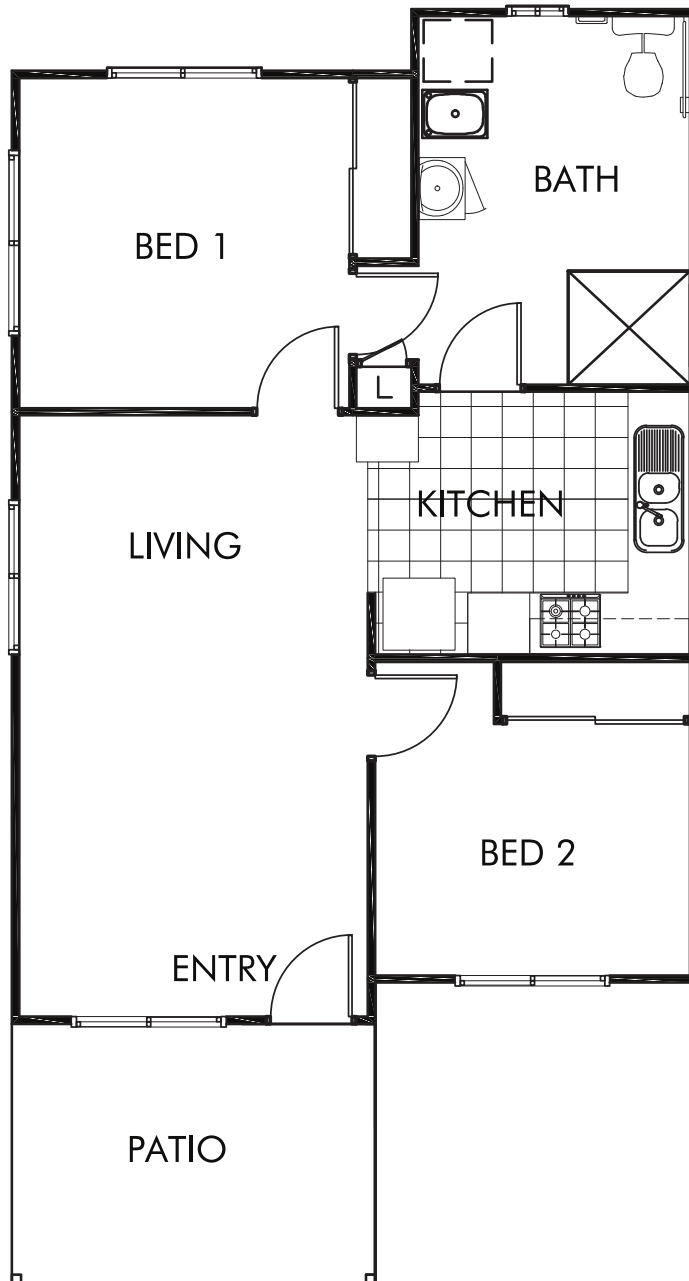


# SILVERGULL



## Room Sizes (mm)\*

Kitchen	3100 x 2600
Living	3400 x 5800
Bed 1	3200 x 3200
Bed 2	3100 x 2400
Patio	3500 x 2500
<b>Total</b>	<b>70.64m<sup>2</sup></b>

## Disclaimer:

- Please note: These plans are for marketing purposes only and whilst are generally typical of the villa layout, some minor variations may apply.
- Furniture not included.
- Final layout is subject to detailed input from service consultants and authorities.
- Gross areas are measured to exterior face wall.