

FITZROY



OAK TREE

RETIREMENT VILLAGES

| NORMAN GARDENS |

3 1.5 1

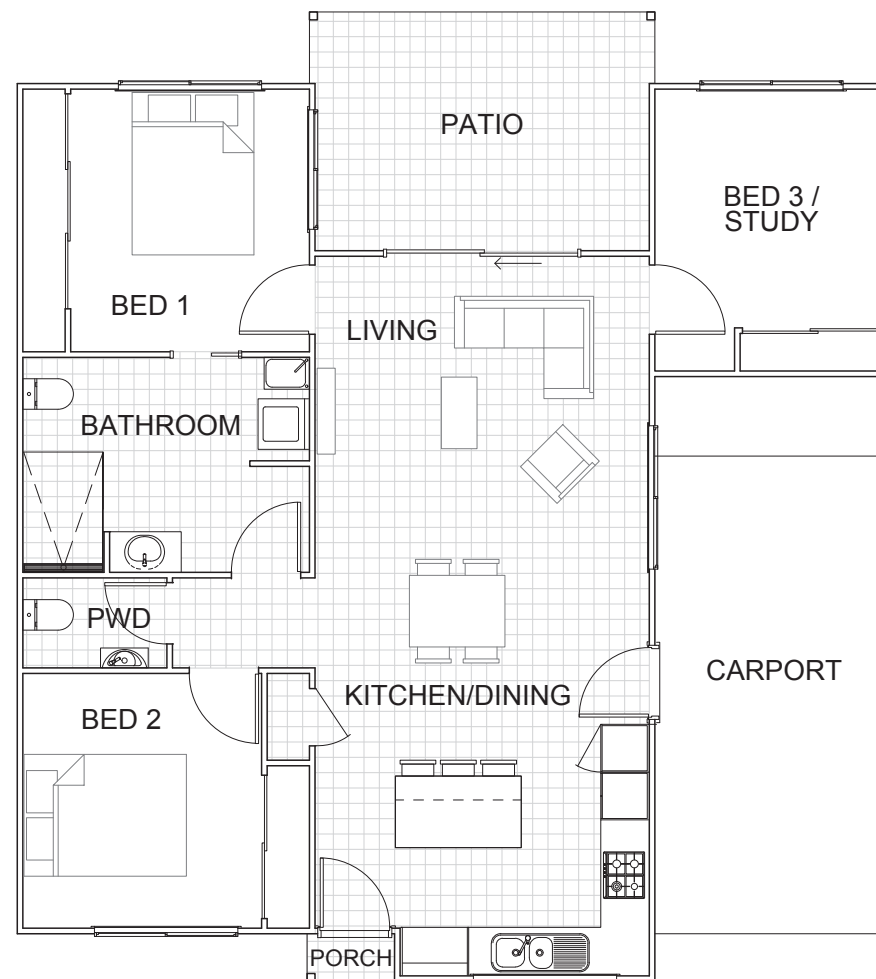
BEDROOMS

Bedroom 1	3.3 x 3.0 m
Bedroom 2	3.2 x 3.0 m
Bedroom 3	3.0 x 2.9 m

LIVING AREAS

Living	4.0 x 4.2 m
Kitchen/Dining	4.4 x 4.2 m
Bathroom	2.7 x 2.8 m
Patio	3.0 x 4.2 m
Carport	6.0 x 3.0 m

AREA TOTAL 125m²



Call 1300 367 155
oaktreegrup.com.au

Disclaimer: These plans are for marketing purposes only and whilst are generally typical of the villa layout, some minor variations may apply. Final layout is subject to detailed input from service consultants and authorities. Furniture shown in plans not included. External fixtures may differ from this plan. Total area is indicative only as measured to external face wall.