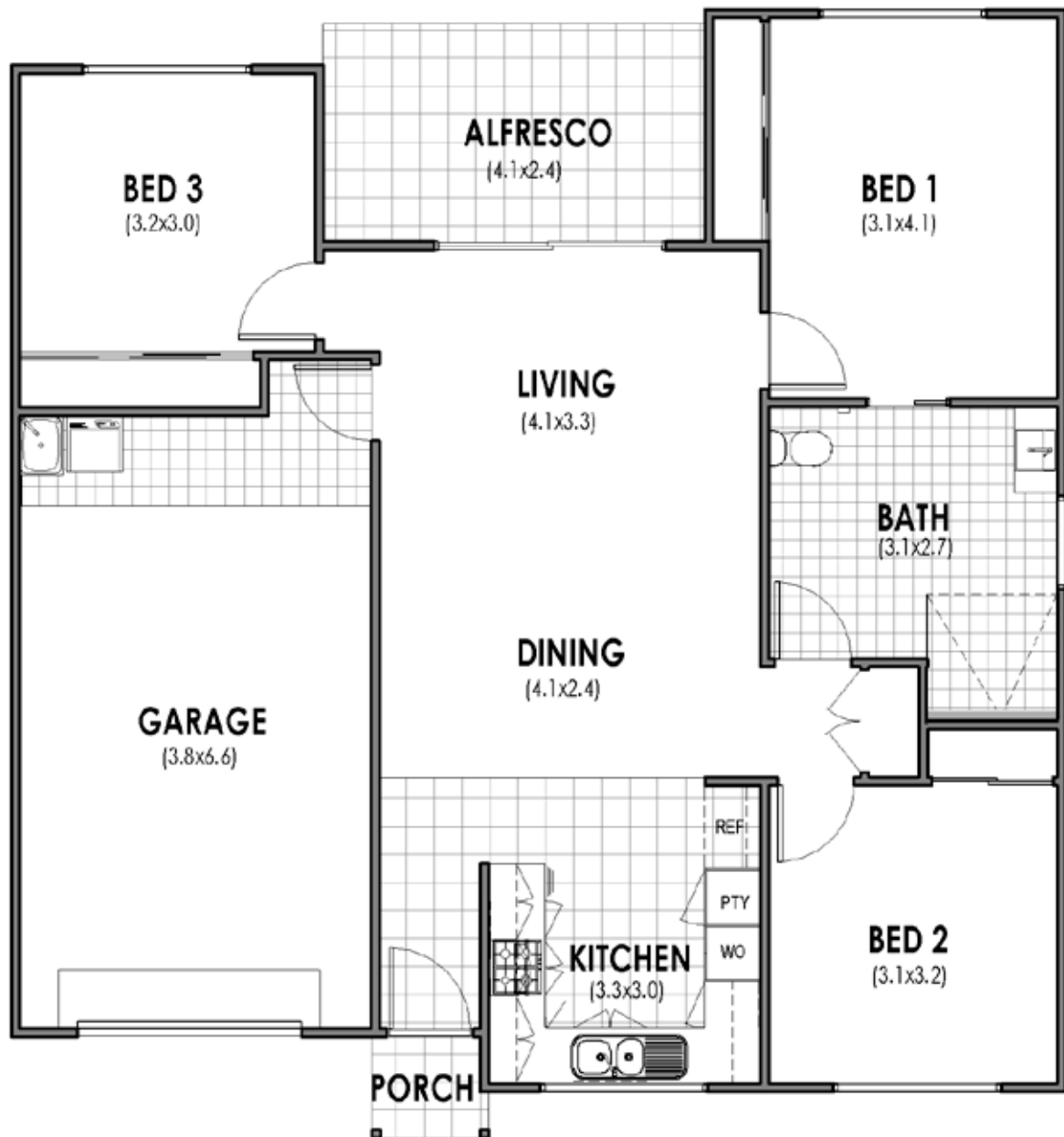


# JABIRU A



Residence	89.76 m <sup>2</sup>
Porch	1.31 m <sup>2</sup>
Alfresco	9.61 m <sup>2</sup>
Car Accommodation	26.61 m <sup>2</sup>
<b>Total</b>	<b>127.29 m<sup>2</sup></b>

Disclaimer:

- These plans are for marketing purposes only and whilst are generally typical of the villa layout, some minor variations may apply.
- Furniture not included.
- Final layout is subject to detailed input from service consultants and authorities.
- Gross areas are measured to exterior face wall.